



Llywodraeth Cymru
Welsh Government

Innovative Housing Programme

The Role for Timber

7 December 2018



Llywodraeth Cymru
Welsh Government

‘What is Innovation’

Innovation can be defined simply as a "new idea, device or method". However, innovation is often also viewed as the application of better solutions that meet new requirements, unarticulated needs, or existing market needs.

Speed of Adopting New Innovation



5th Avenue, New York, 1900

“Everything that can be invented has been invented.”

Charles Duell, Commissioner of US Patent Office, 1899

5th Avenue, New York 1913

Spot the horse?



Innovative Housing Programme

The programme aims to create demonstrator schemes to help inform us about the type of homes we should support in the future.

The Programme is over three years and seeks to stimulate the design and delivery of new quality, affordable homes to:

- increase supply as part of the 20,000 target;
- speed up delivery of homes to the market;
- trial new housing models and methods of delivery that address issues such as:
 - pressing housing need;
 - fuel poverty;
 - demographic change; and
 - help carbon reduction targets
- prove the replicability of innovative housing models.

Innovative Housing Programme

The Innovative Housing Programme seeks to support innovation and impact in three different streams:

CONSTRUCTION TECHNIQUES

new and emerging forms of construction, materials or processes.

DELIVERY PATHWAYS

alternative approaches to commissioning, procurement or collaborative working.

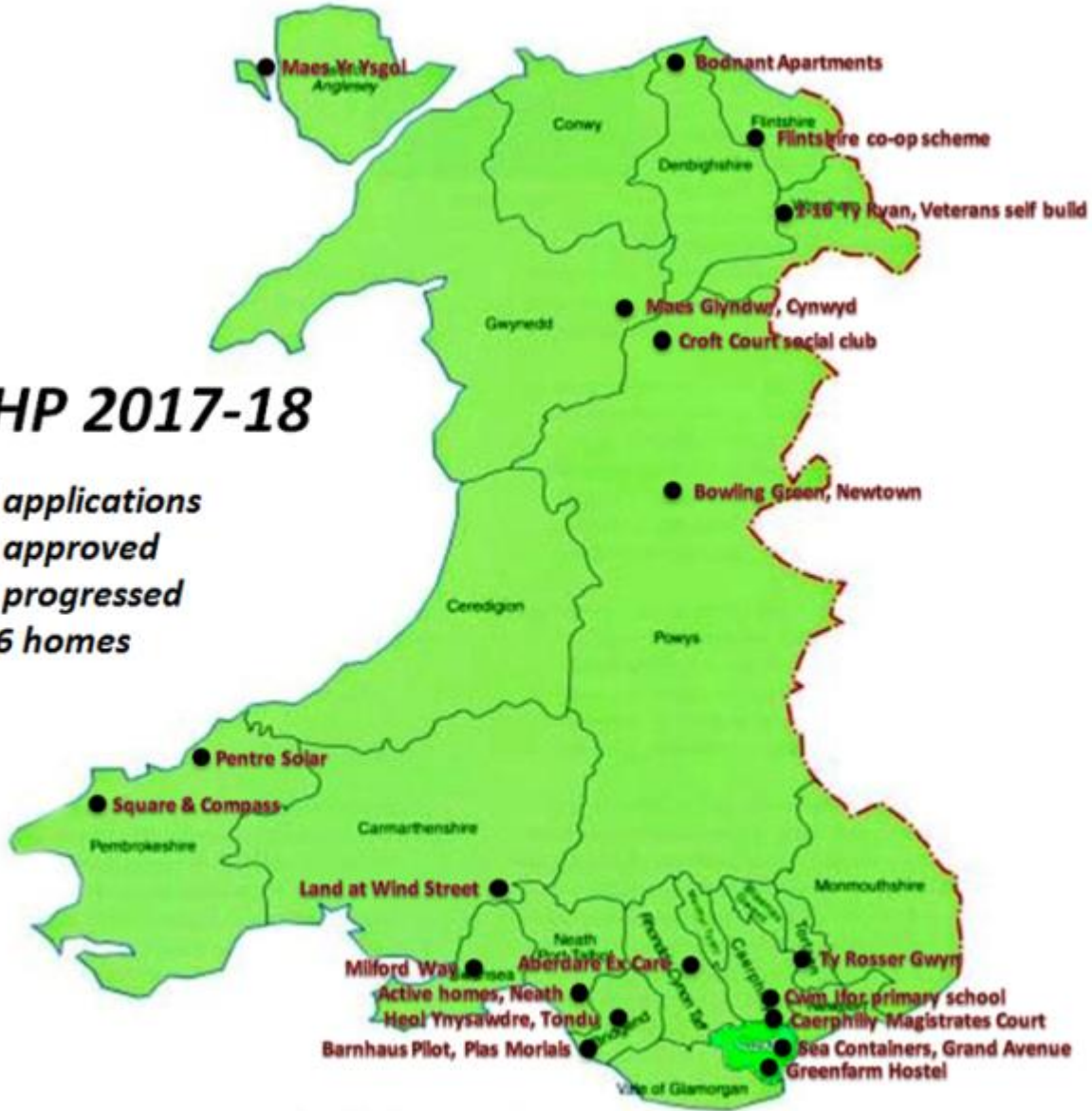
HOUSING MODELS

dwelling types that respond to a specific need or promote increased applicability.

Innovative Housing Programme – 2017-18

IHP 2017-18

- 35 applications
- 22 approved
- 20 progressed
- 276 homes



Innovative Housing Programme – 2018-19

Key Dates

- **30 May** and **1 June** – IHP 2018-19 launch events.
- **12 July** – Application closing date.
 - 48 applications (30 RSL's, 11 LHA's and 7 Private Sector)
- **28 July** – Independent Assessment Panel meeting.
 - 25 schemes shortlisted and 2 reserves.
- **September** – 26 Clarification interviews held.
- **16 October** – Minister announces £43m support for 26 schemes in Plenary Statement to build near 660 homes.
- **30 April 2019** – All 26 schemes are required to be on site and building.

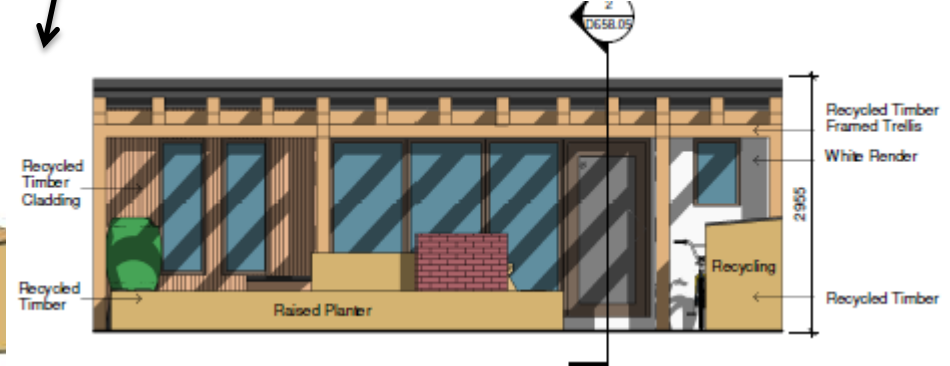
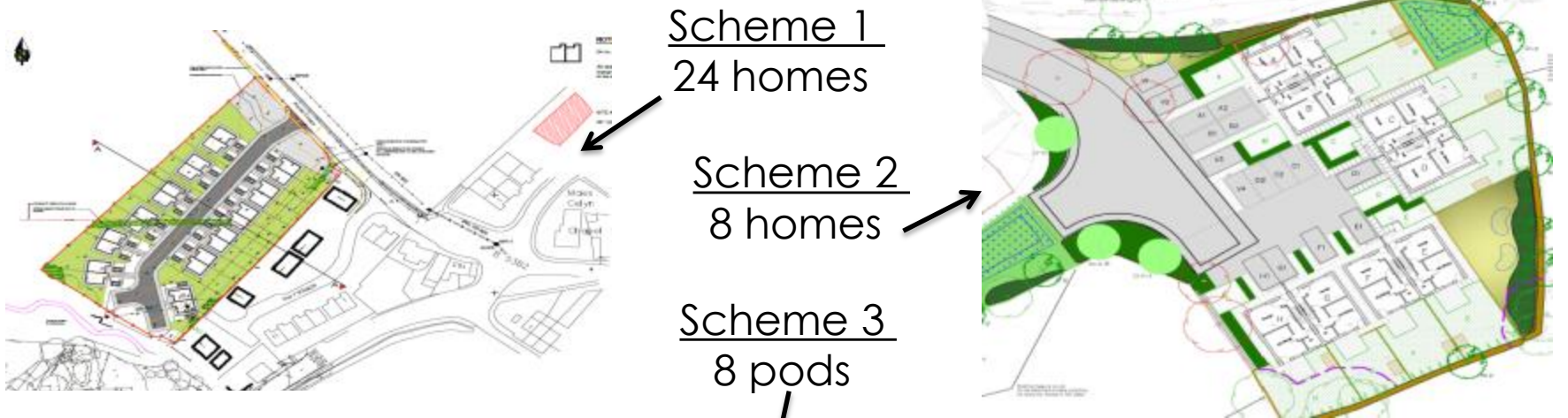
Linc Cymru – City Rd, Cardiff

- Supporting a new 10 storey Cross Laminated Timber (CLT) Tower with vertical greening, creating 50 new homes.
- This is seen as UK first, combining CLT and vertical greening.
- The material used is both sustainable and low carbon.
- It will also have a much shorter construction phase, estimated to be only 12 weeks.



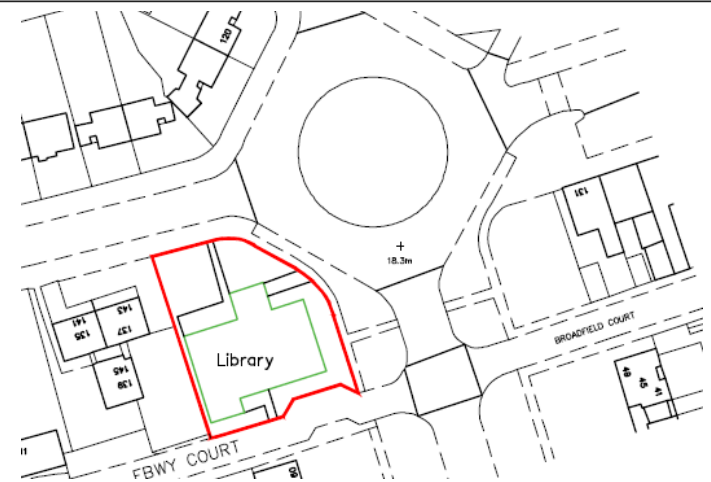
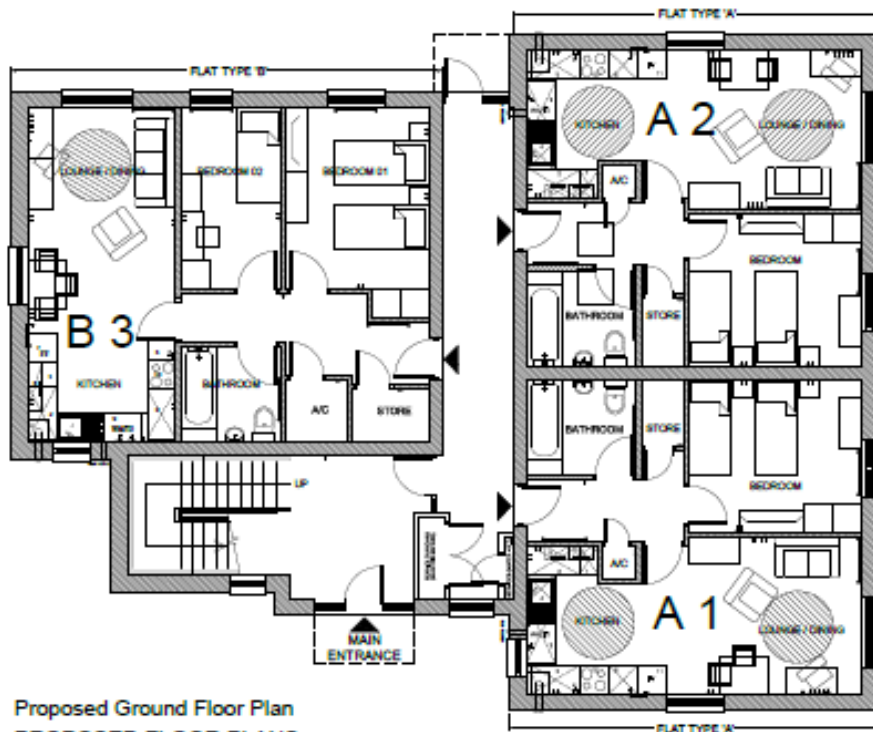
Denbighshire CC and Cartrefi Conwy– Beattie Passive

- Funding three schemes in North Wales that will establish and support the provision of a new local factory that will deliver new local jobs and training.
- The timber framed homes built at the factory will be Beattie Passive accredited.
- Using high performance insulation and be draught free, to eliminate heat loss.
- The factory will create homes with very low environmental impact and reduced fuel costs for tenants.



United Welsh – Trelai Community Centre

- Funding a housing co-operative from first principles development.
- The main contractor, based in Wales, building residential homes for the first time.
- The scheme will focus on the utilisation of green energy technologies for communal energy generation to reduce running costs, service charges and overall carbon emissions.



The Role for Timber

Wales has the opportunity to lead the rest of the UK by creating a commercial environment for the demand led transformation of the forestry and timber sectors.

The Role for Timber in IHP

More and better homes - that showcase wood as a flexible high-performance material for construction and manufacturing, in cost-effective and scalable systems.

More and better local manufacturing – showcase the potential and pathway for growth of the Welsh timber manufacturing sector for housing.

More and better home-grown timber - showcase the potential and pathway for growth of the Welsh forestry.

“Turning to next year, I want the Programme to push the boundaries on both the type and scale of innovation. Only by doing this will more homes, be delivered more quickly, to meet the needs and aspirations of people in Wales now and long into the future.”

Rebecca Evans – 16 October 2018

Innovative Housing Programme – 2019-20

The IHP budget is £90 million over three years. So far we have committed £61 million of funding leaving £ 29 million. However, we are looking to make some fundamental changes to next years process, by introducing three streams.

Stream 1 - an open bidding process for schemes that demonstrate an up scaling of innovation over years 1 or 2. All schemes subject to a design review and panel assessment. Will allow schemes who are not successful to re-submit.

Stream 2 – to fund schemes over years 1 or 2. In addition this stream would be supported. All schemes will have a closing date and independent assessment.

Stream 3 – to fund schemes over years 1 or 2. This stream will focus on building supply chain solutions.

Innovative Housing Programme – 2019-20

The IHP budget is £90 million over three years. So far we have committed £61 million of funding, leaving £ 29 million. However, we are looking to make some fundamental changes to next years process, by introducing three funding streams.

Stream 1 - an open bidding process for schemes that demonstrate an up scaling of innovation supported in Years 1 or 2. All schemes subject to a design review and independent panel assessment. Will allow schemes who are rejected, to improve and resubmit.

Stream 2 – to fund innovation not supported in Years 1 or 2. In addition this stream will have proposal challenges set by Welsh Government. All schemes subject to a design review, closing date and independent panel assessment.

Stream 3 – revenue funding for R&D, procurement, exploring supply chain solutions.

Innovative Housing Programme

The Innovative Housing Programme seeks to support innovation and impact in three different streams:

CONSTRUCTION TECHNIQUES

new and emerging forms of construction, materials or processes.

DELIVERY PATHWAYS

alternative approaches to commissioning, procurement or collaborative working.

HOUSING MODELS

dwelling types that respond to a specific need or promote increased applicability.

“Turning to next year, I want the Programme to push the boundaries on both the type and scale of innovation. Only by doing this will more homes, be delivered more quickly, to meet the needs and aspirations of people in Wales now and long into the future.”

Rebecca Evans – 16 October 2018



Llywodraeth Cymru
Welsh Government

Any Questions

Darren.hatton@gov.wales

Or

InnovativeHousingProgramme@gov.wales